

University of Messina
Ocular Surface Unit - Italy



Università degli studi di Messina
DIPARTIMENTO DELLE SPECIALITÀ CHIRURGICHE

CENTRO DI ECCELLENZA REGIONALE PER
LE MALATTIE DELLA SUPERFICIE OCULARE

Responsabile: Prof. P. Aragona

SOCIETÀ OTALMOLOGICA SICILIANA

XL CONGRESSO

LENTI A CONTATTO E SUPERFICIE OCULARE

LESIONI CORRELATE ALLE LENTI A CONTATTO

Pasquale Aragona

Giardini Naxos (ME), 18 Aprile 2015

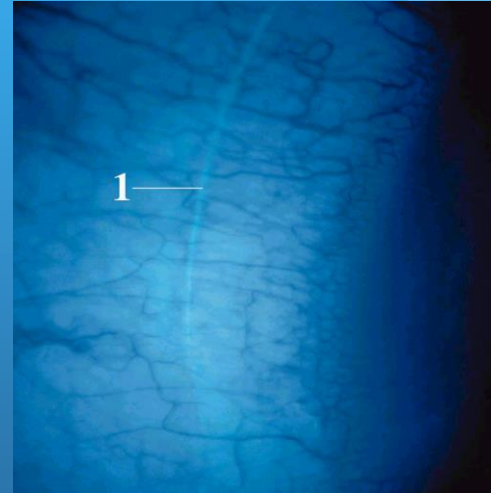
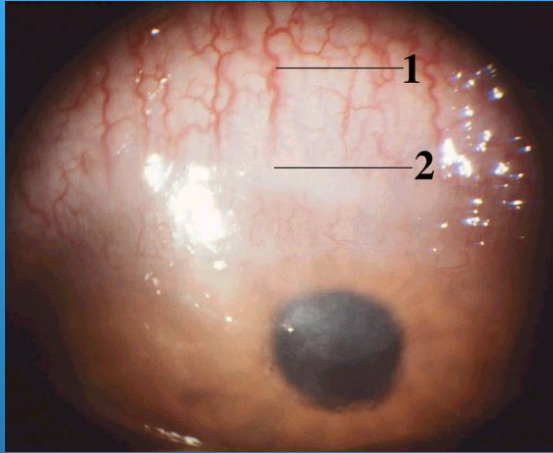
LESIONI EPITELIALI DA LENTI A CONTATTO

- DIRETTE:
- *MECCANICHE*
- *CHIMICHE*
- *IPOSSICHE*
- *ALLERGICHE*

- INDIRETTE:
- *LESIONI NERVOSE*

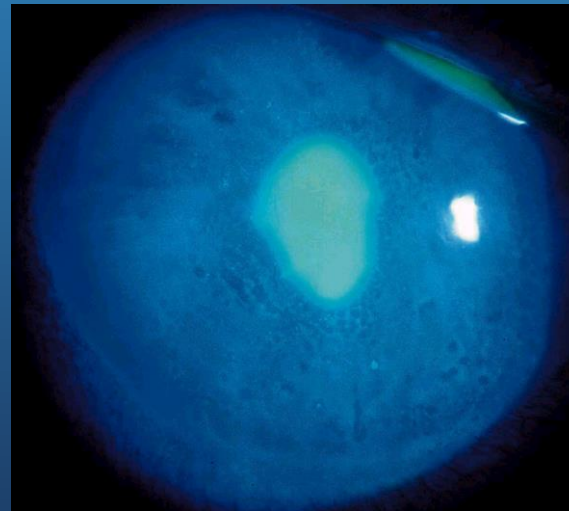
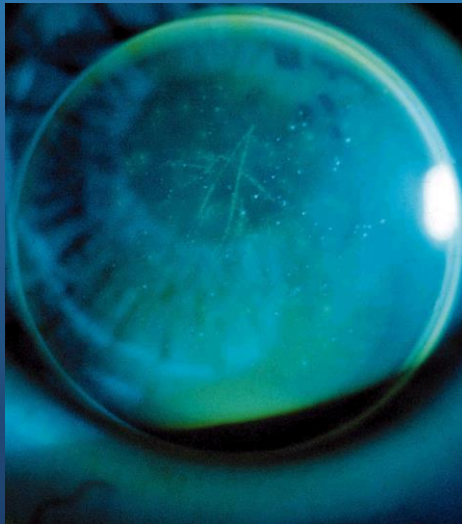
LESIONI MECCANICHE

Lente Stretta:
Neovasi limbari
con fallimento
limbare e
congiuntivalizza
zione corneale
dovute a
sfregamento
della lente



Lente Stretta:
Segno di
decubito della
lente sulla
congiuntiva

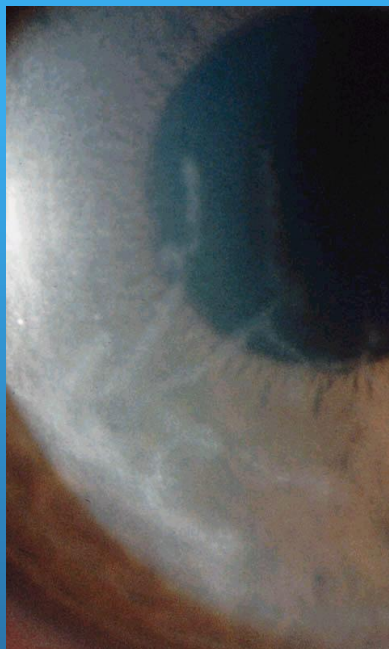
Detriti sotto
la lente



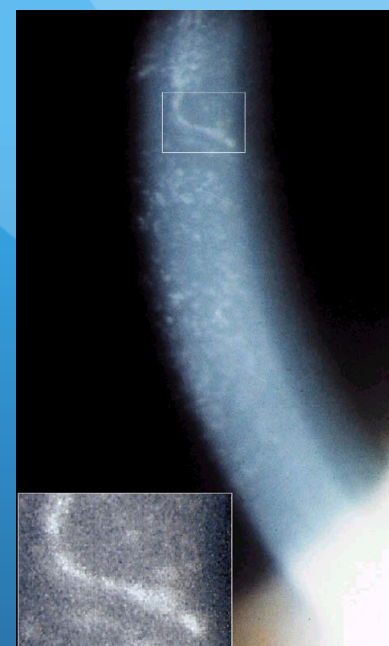
Lente Piatta:
Estesa
erosione
corneale
dovuta

LESIONI MECCANICHE

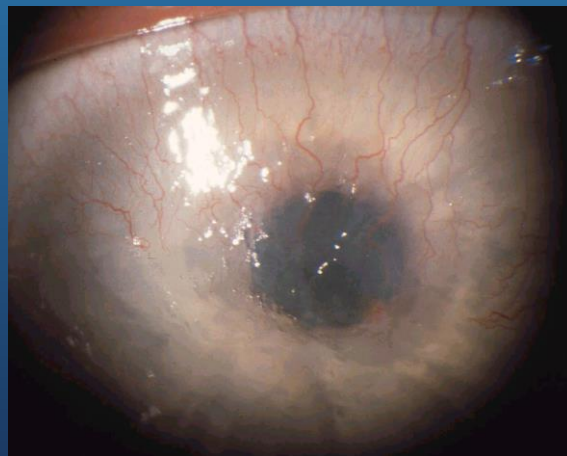
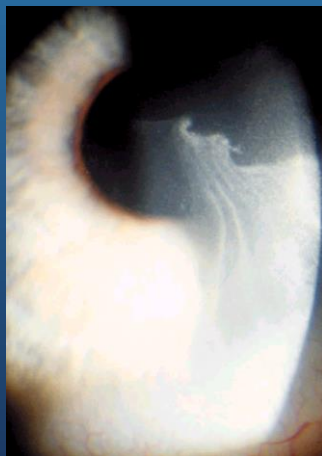
Lesione dendritiforme dovuta a irritazione meccanica dell'epitelio



Diagnosi
Herpes,
Acanthameba

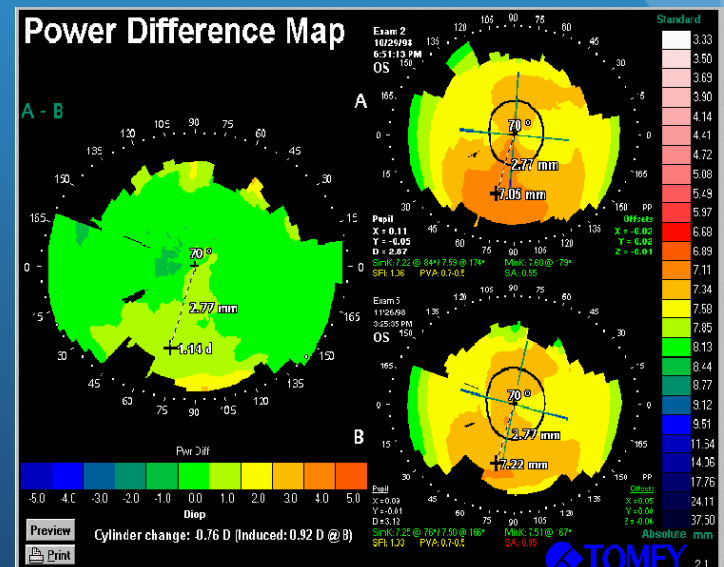
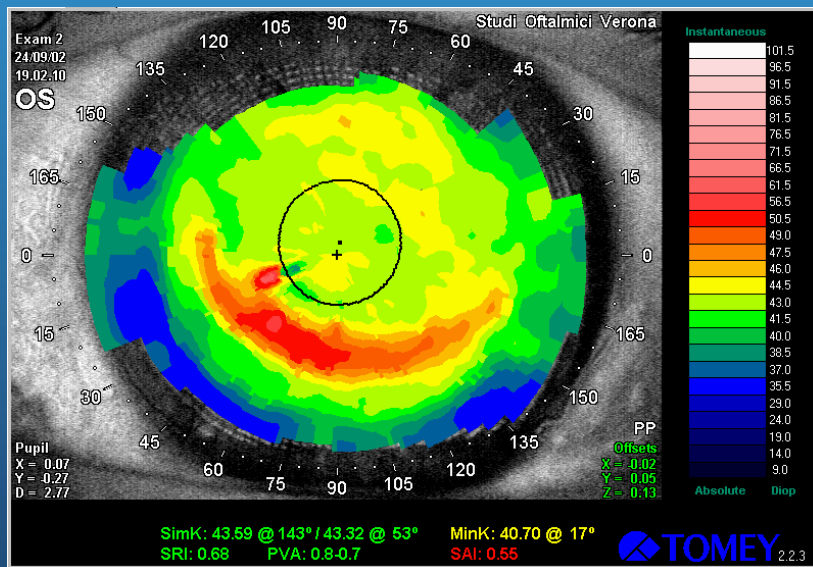


Metaplasia Epiteliale dovuta ad irritazione epiteliale



LESIONI MECCANICHE

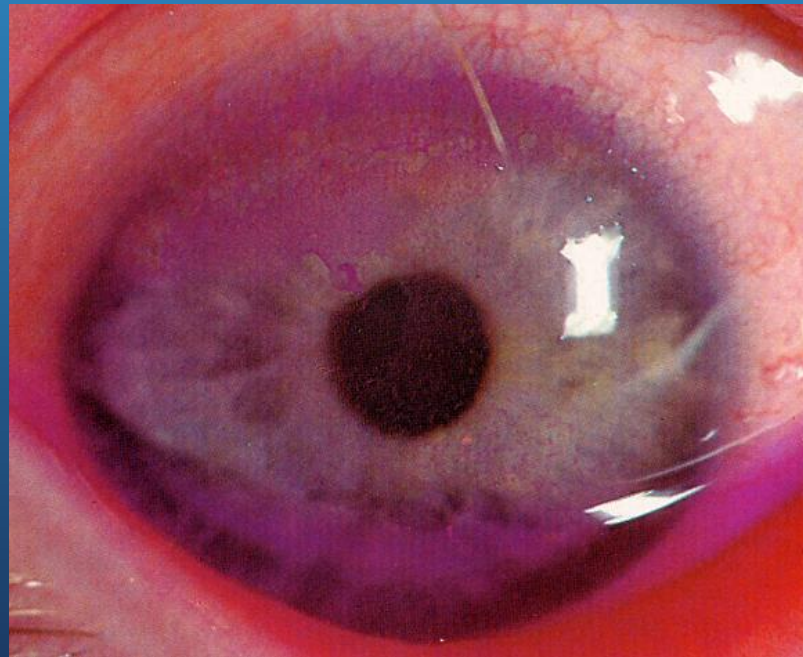
- WARPAGE



LESIONI CHIMICHE

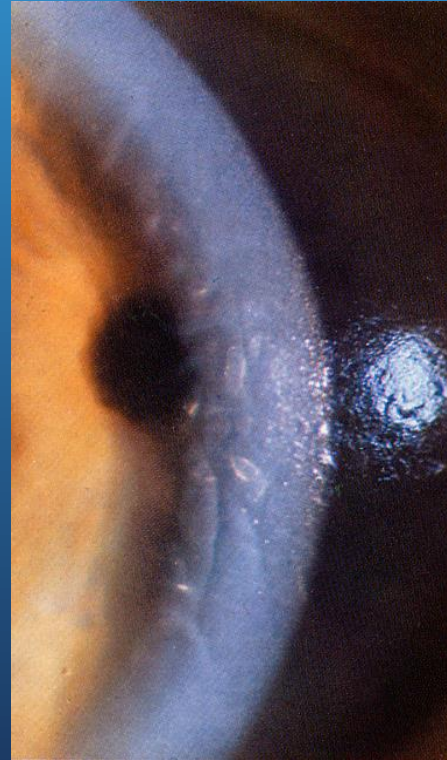
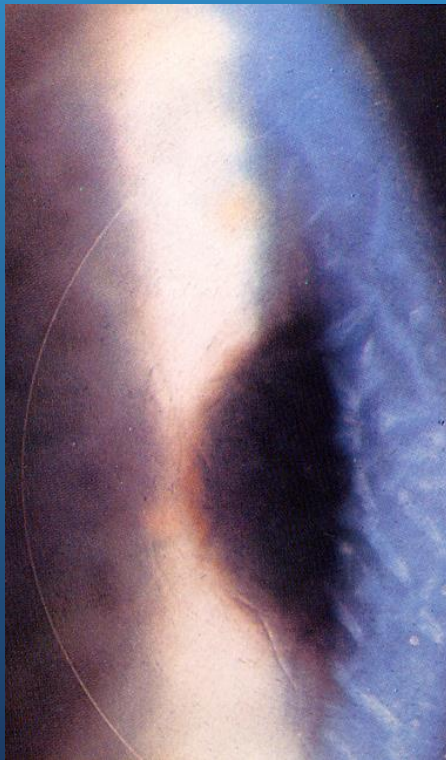
- DOVUTE A :
 - SOLUZIONI IPERTONICHE
 - ENZIMI
 - PEROSSIDO DI IDROGENO

CHERATOPATIA PUNTATA

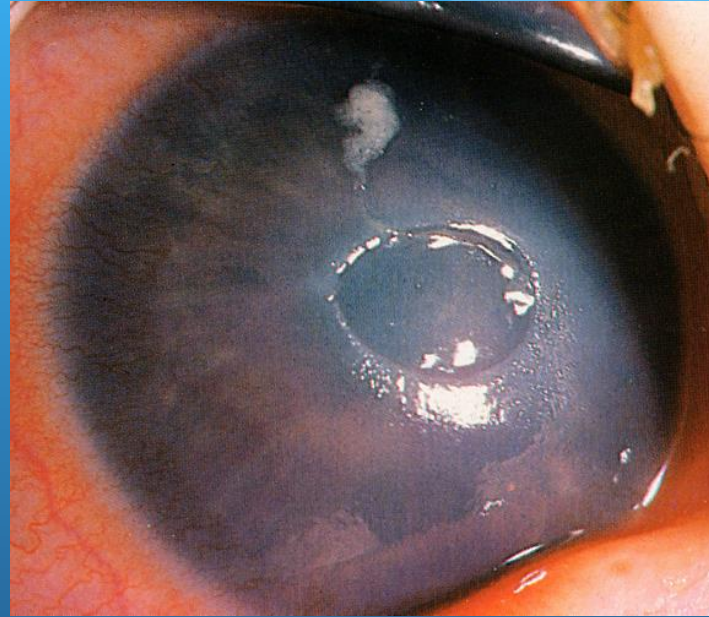
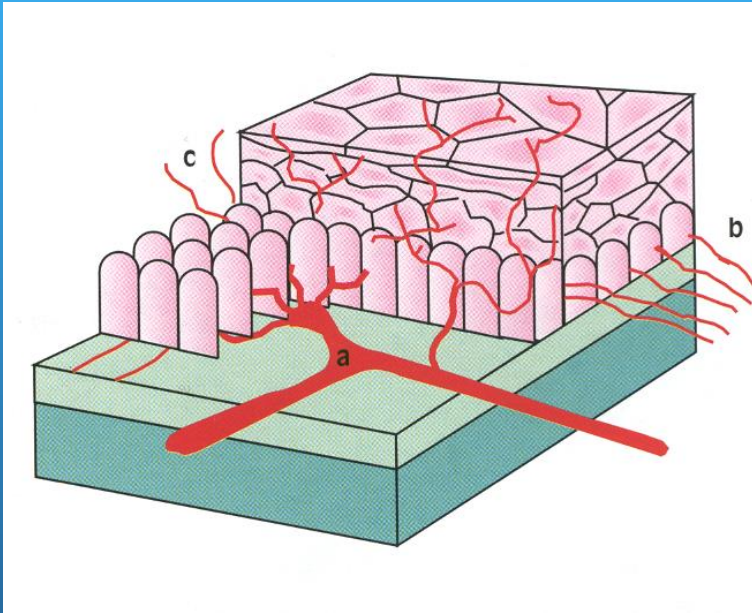


IPOSSIA

- Edema corneale epiteliale e stromale
- Cellule epiteliali cheratinizzate
- Neovasi
- Dolore, visione offuscata, iperemia, fotofobia



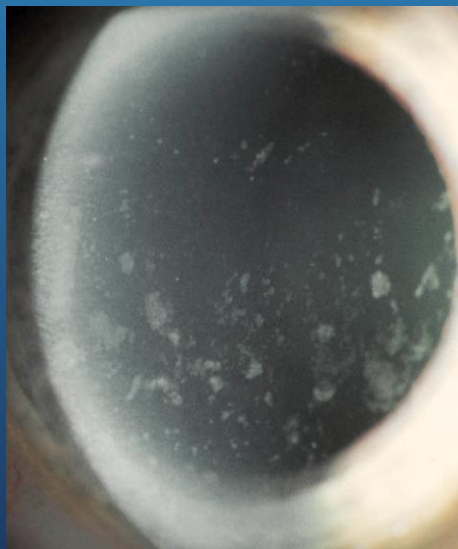
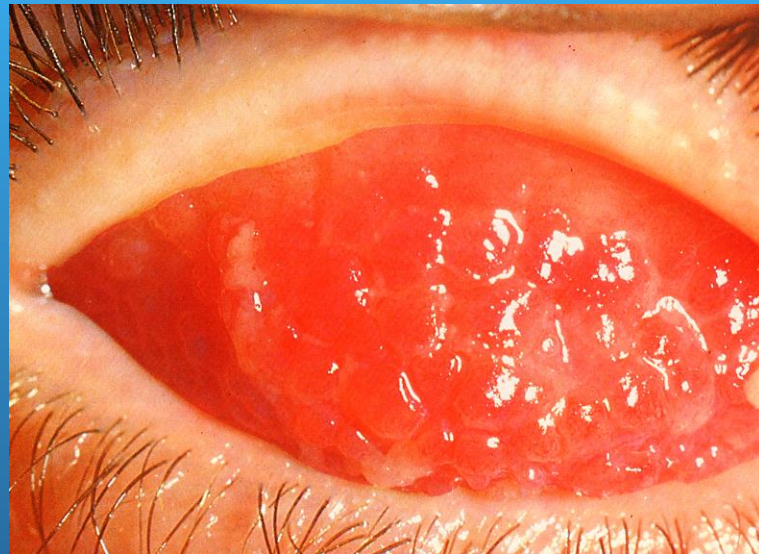
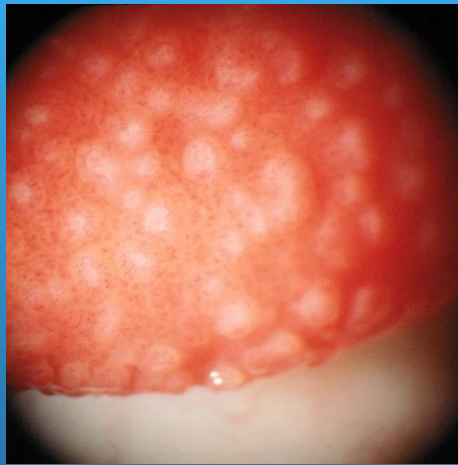
IPOESTESIA CORNEALE



- SOFFERENZA EPITELIALE CON POSSIBILI ULCERE
- IMPORTANTE CONSIDERARE LA SENSIBILITÀ CORNEALE PRIMA DI INTERVENTI DI REFRAATTIVA

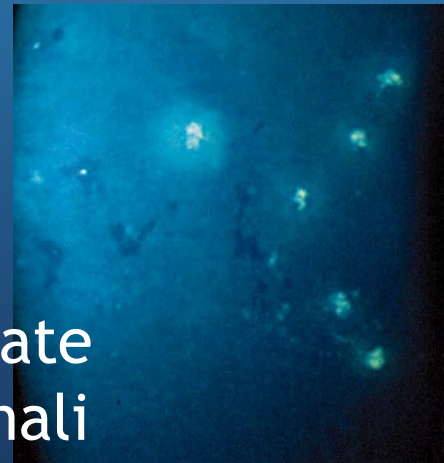
ALLERGIA

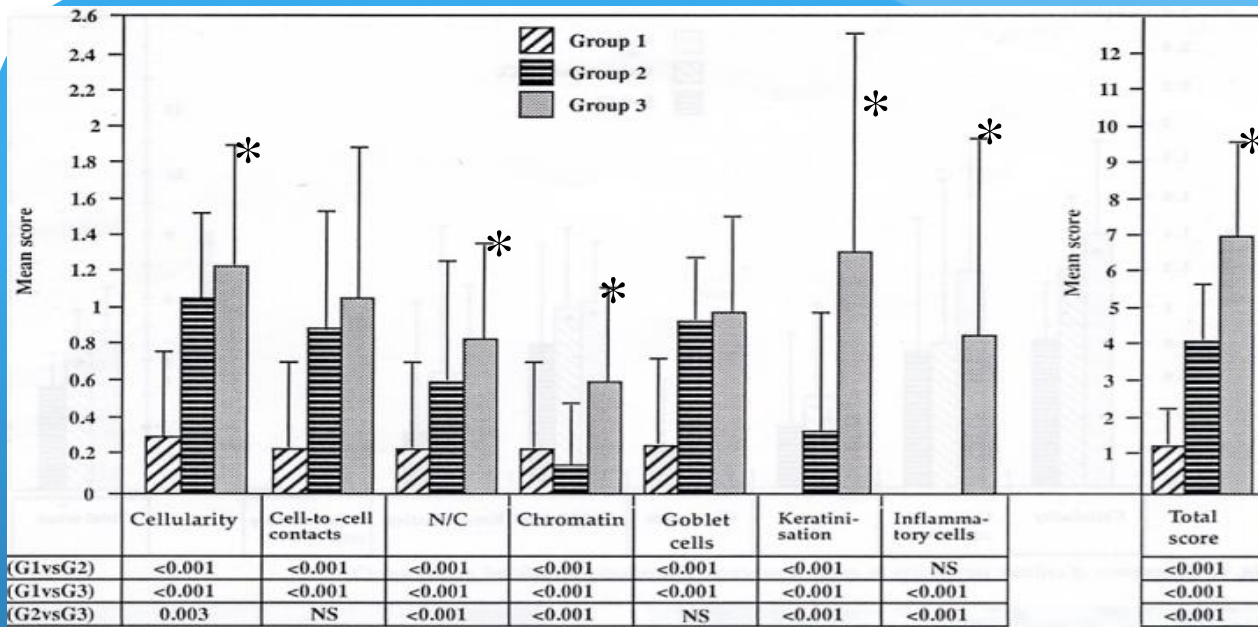
Congiuntivite a Papille Giganti



Allergia da
contatto a
depositi
corneali

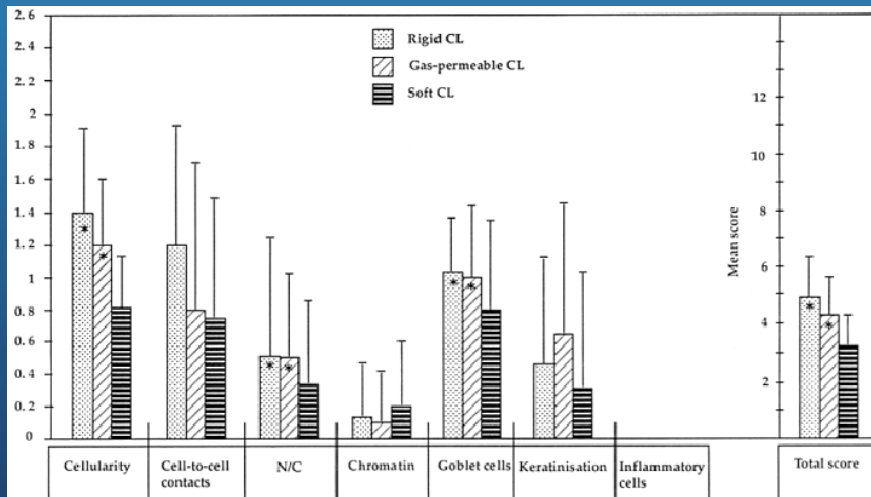
Cheratiti Puntate
Infiltrati stromali





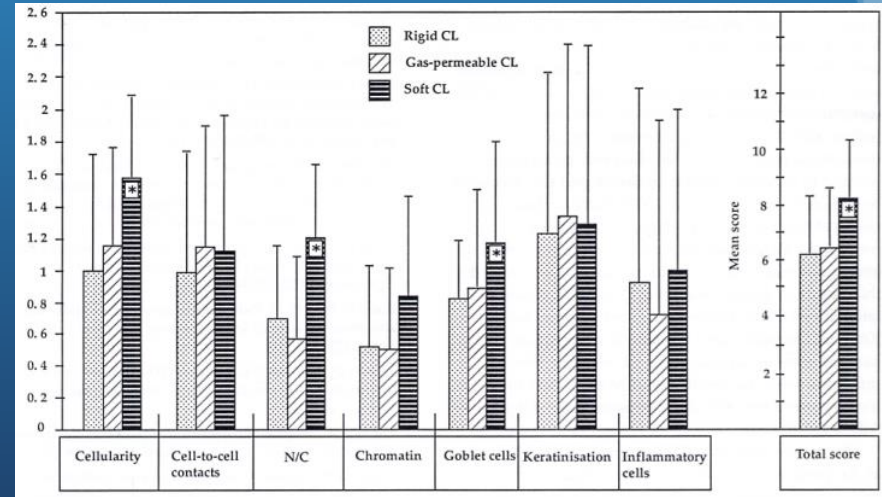
Group 1: non wearing
 Group 2: non intolerant wearers
 Group 3: intolerant wearers

Patients w/o Intolerance to CL



Comparison of cellular parameters in group 2 patients. *Statistically significant versus soft CL.

Patients w Intolerance to CL



Comparison of cellular parameters in group 3 patients. *Statistically significant versus rigid and gas-permeable CL.

