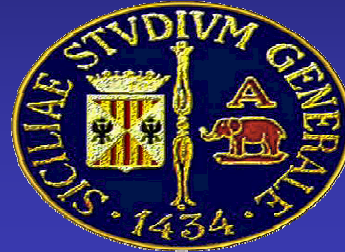


Università degli Studi di Catania

Clinica Oculistica

Direttore: Prof. A. Reibaldi



**3 ANNI DI TRATTAMENTO DI
NEOFORMAZIONI
CONGIUNTIVALI PRESSO LA
CLINICA OCULISTICA
DELL'UNIVERSITA' DI CATANIA**

A. Scuderi, P. Biondi, J. P. Ott,

L. Motta, M. E.Ciulla, D. Farruggio, F. Munno, D. Malannino.

XXXV Congresso So.S.I.

TERRASINI 15-17Aprile 2010

NOSTRA CASISTICA DA APRILE 2007-APRILE 2010

40 PAZIENTI (26 ♂, 14 ♀)

N° OCCHI TRATTATI = 40 (30 MA-10 SMA)

ETA' 10-79aa (media = 46aa)

- 30 NEVI MELANOCITICI (75%)
- 6 MELANOMI CONGIUNTIVALI (15%)
- 1 PAPILOMA CONGIUNTIVALE INVERTITO (2,5%)
- 1 EMANGIOMA VENOSO (2,5%)
- 2 NEOFORMAZIONI IN ATTESA DI REFERTO ISTOLOGICO

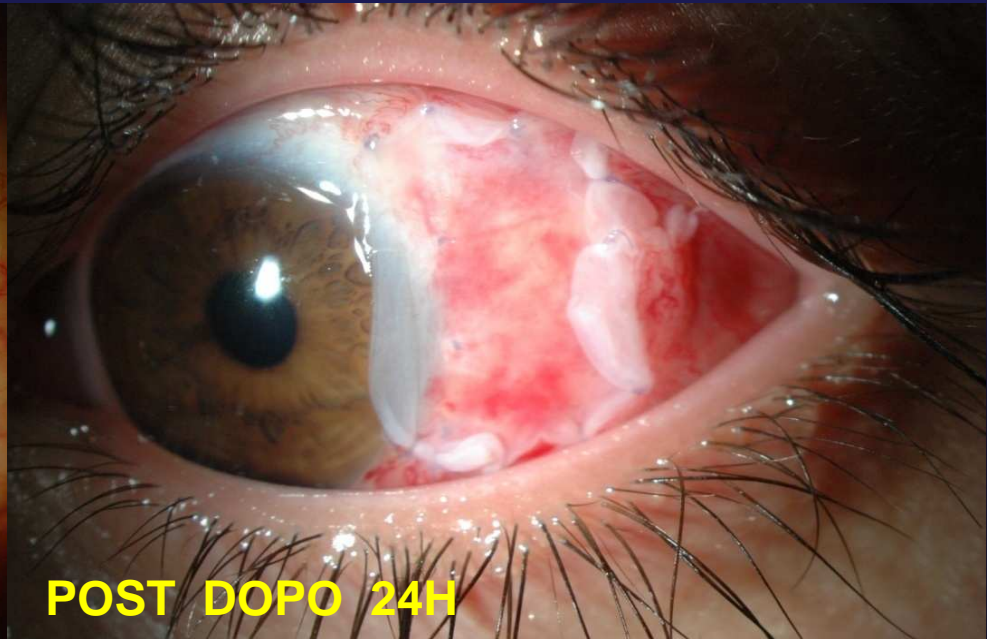
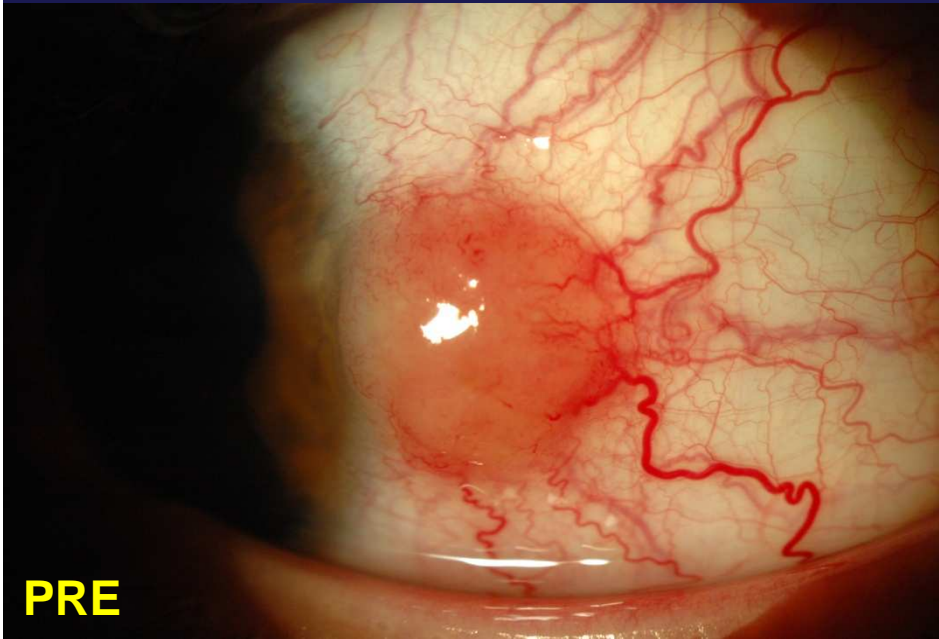
MEMBRANA AMNIOTICA

- E' LO STRATO PIU' INTERNO DELLA PLACENTA CHE CONSISTE DI UN SINGOLO STRATO DI EPITELIO, CON MEMBRANA BASALE SPESSA E STROMA AVASCOLARE
- FACILITA LA MIGRAZIONE E LA CRESCITA DELLE CELLULE EPITELIALI PROMUOVENDO L'EPITELIZZAZIONE
- LO STROMA AVASCOLARE RIDUCE LA NEOVASCOLARIZZAZIONE
- EPITELIO AMNIOTICO PRODUCE FATTORI DI CRESCITA E ANTIINFIAMMATORI

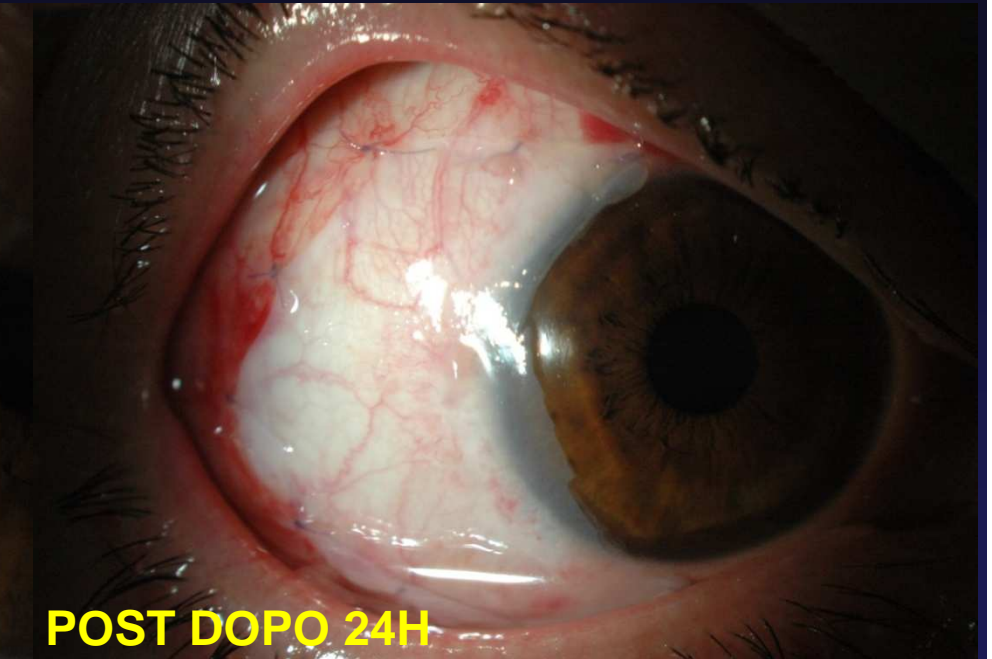


DEV. OPHTHALMOL.2009 JUN 3;
EUR. J. OPHTHALMOL.2009 DEC 12;
OPHTHAL PLAST RECONSTR SURG 2009 SEP-OCT

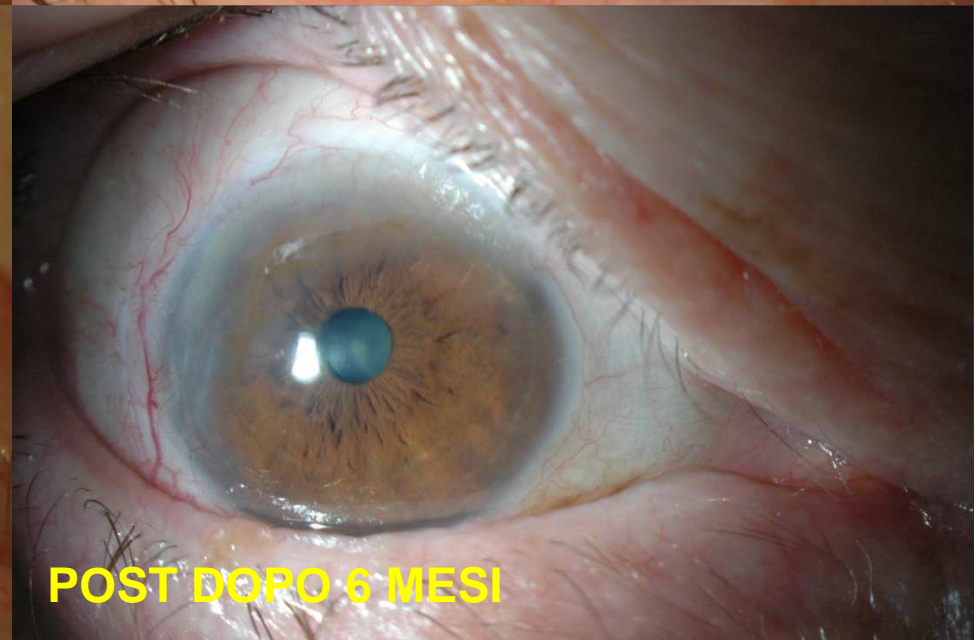
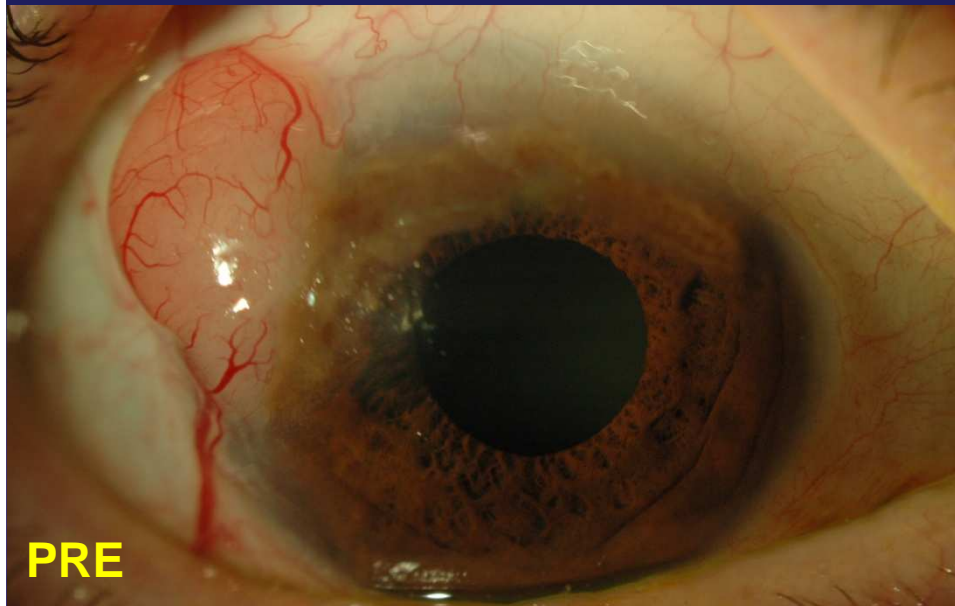
C.E. ♂ 11 aa OS



V.F. ♀ 46 aa OD



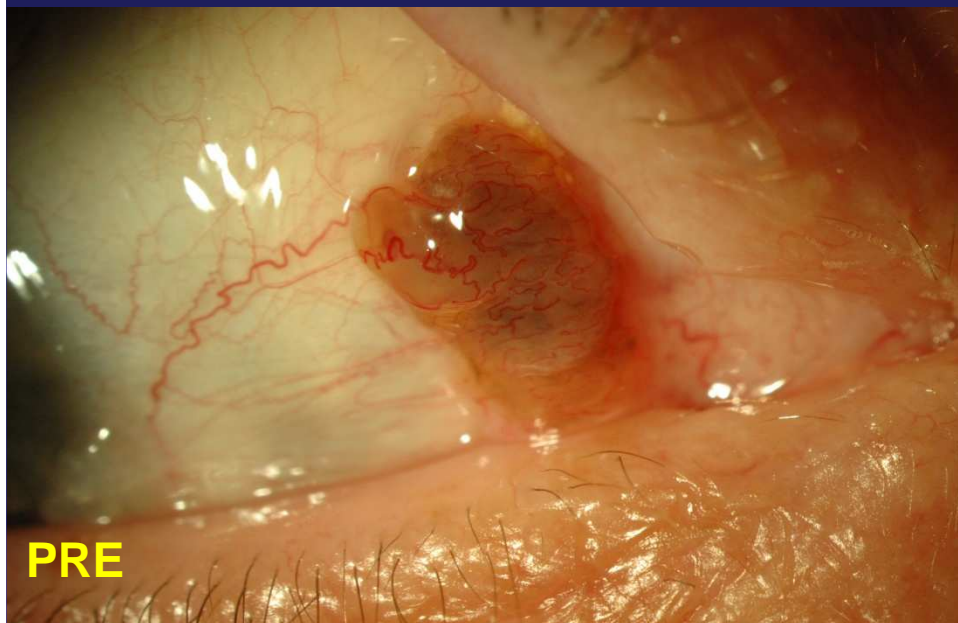
B.A. ♂ 72aa OD: melanoma a cellule fusate, apigmentato, ulcerato



Adroterapia dopo 4 mesi

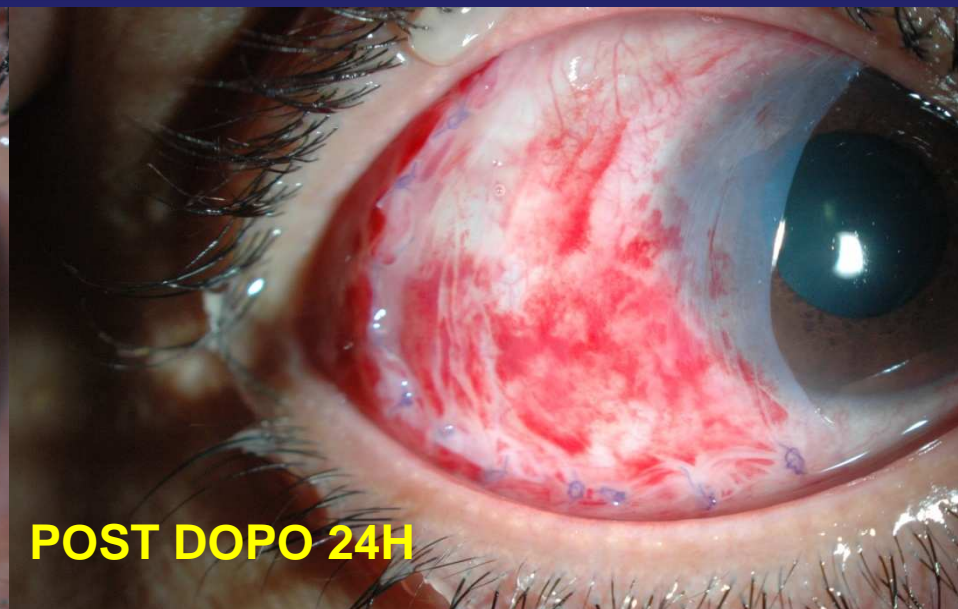
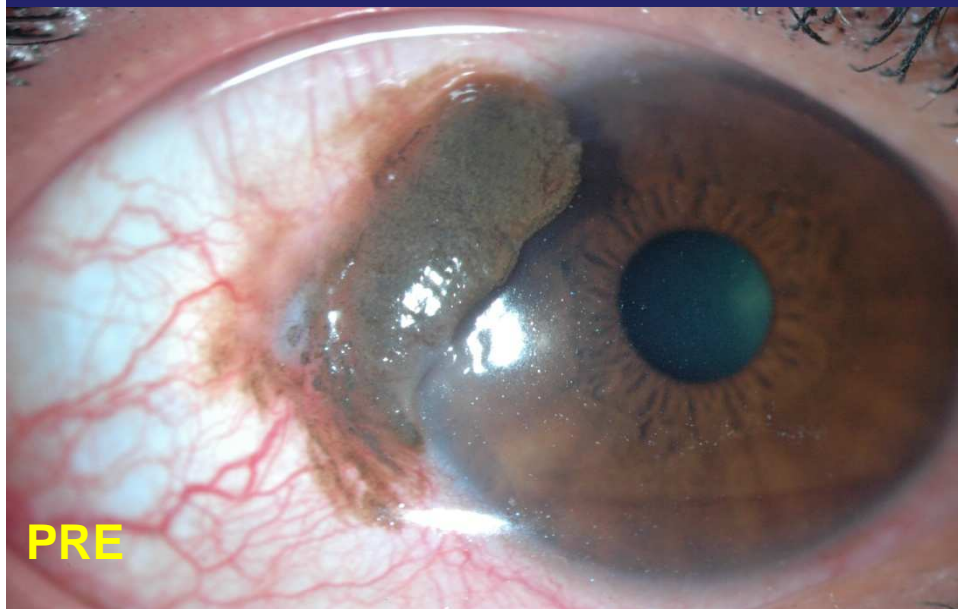
Follow-up 6 mesi

C.G. ♂ 73aa OD: nevo melanocitico subepiteliale

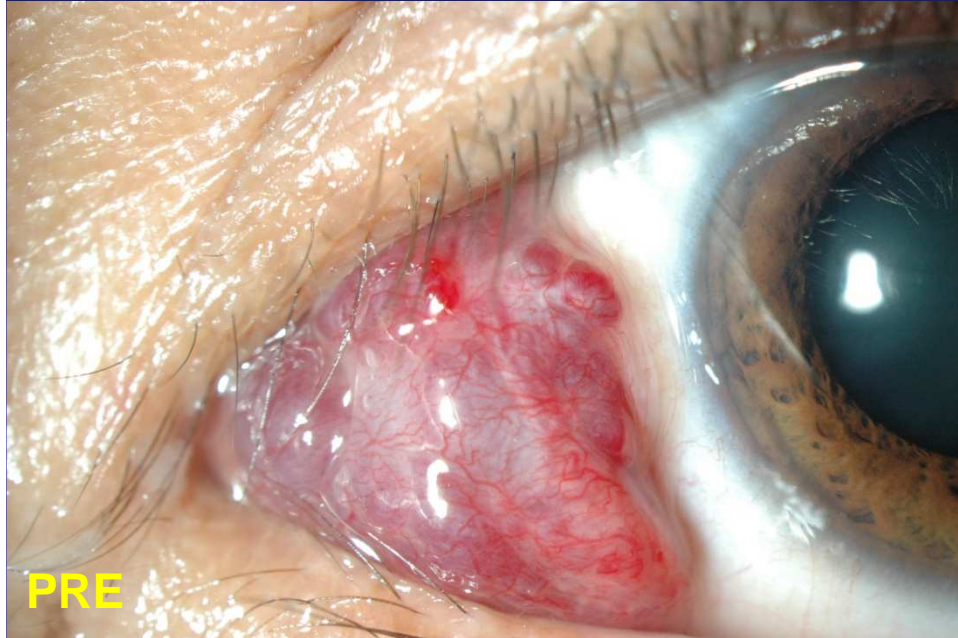


Follow-up 7 mesi

I.M. ♀ 48aa OD: Melanoma invasivo a cell. epitelioidi pigmentate insorto su un nevo preesistente, adroterapia per recidiva

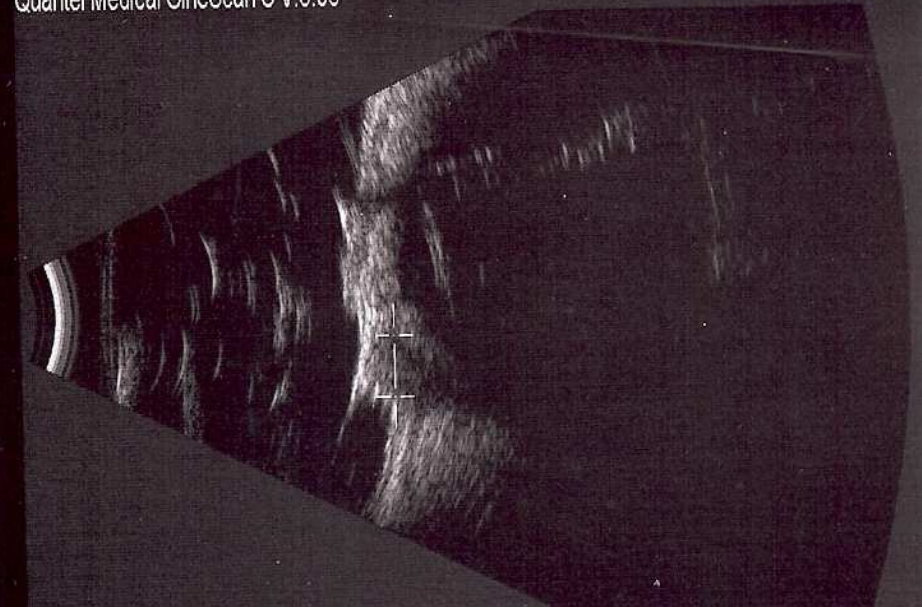


A.A. ♀ 48 aa OS : Emangioma cavernoso



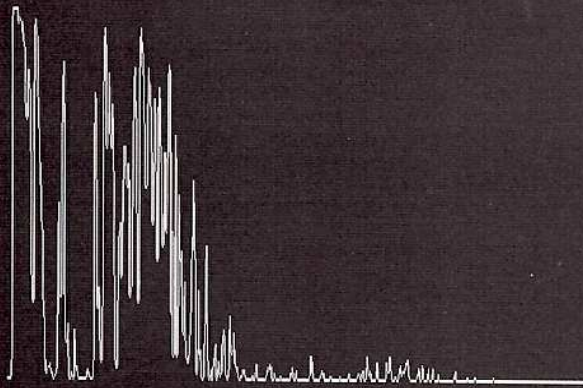
Follow-up 9 mesi

Quantel Medical CineScan S V:5.05

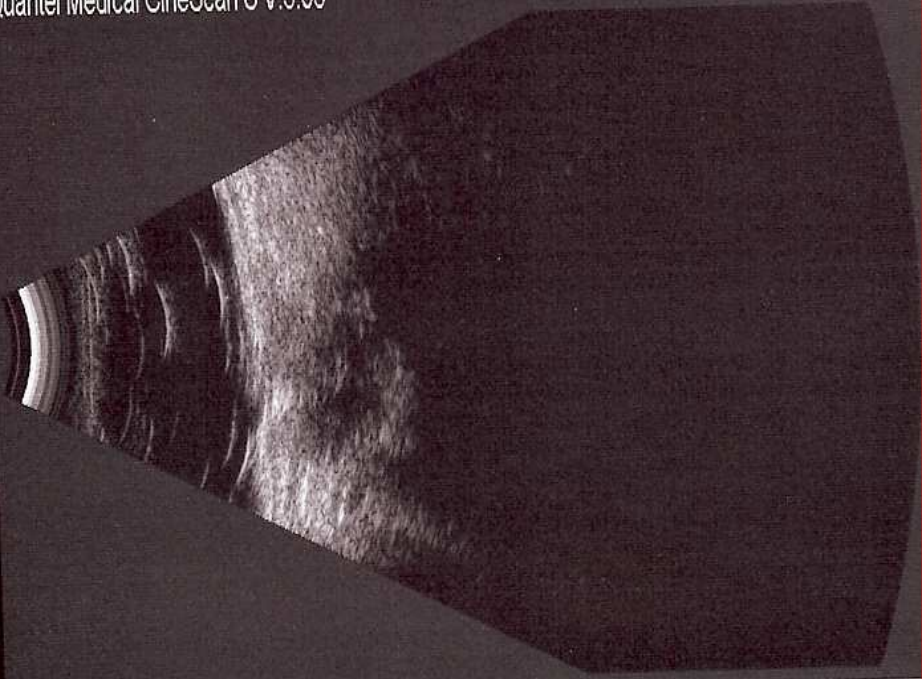


Velocity (m/s) : 1550 Distance= 3.84mm

Quant-I=70%
AVG Height=58%

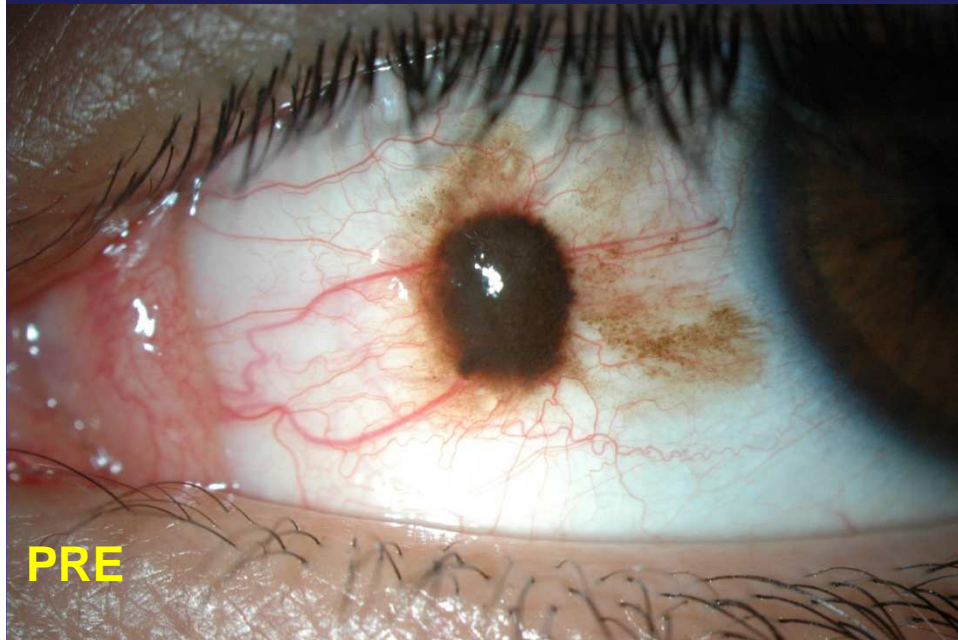


Quantel Medical CineScan S V:5.05

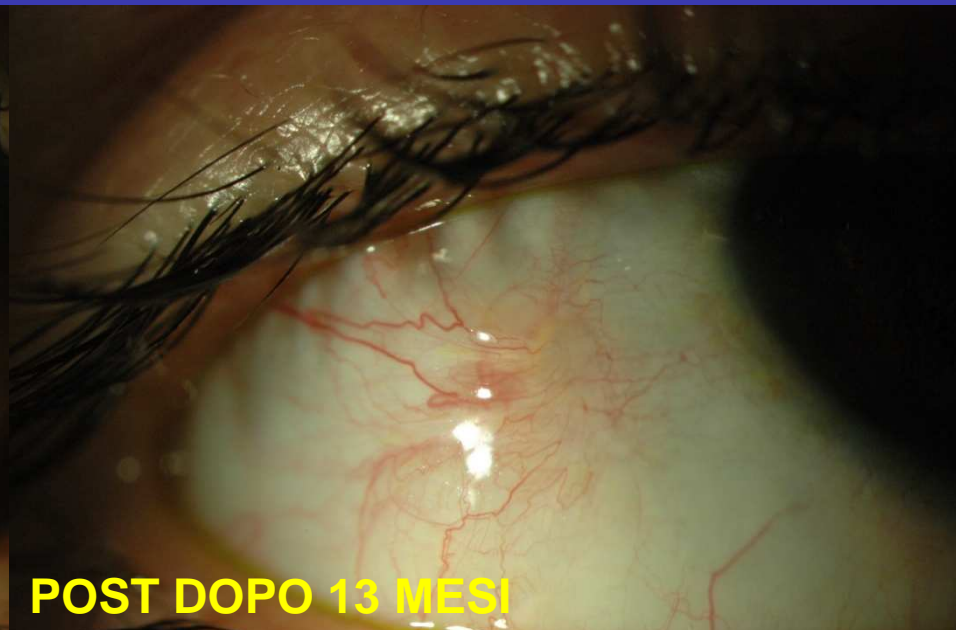
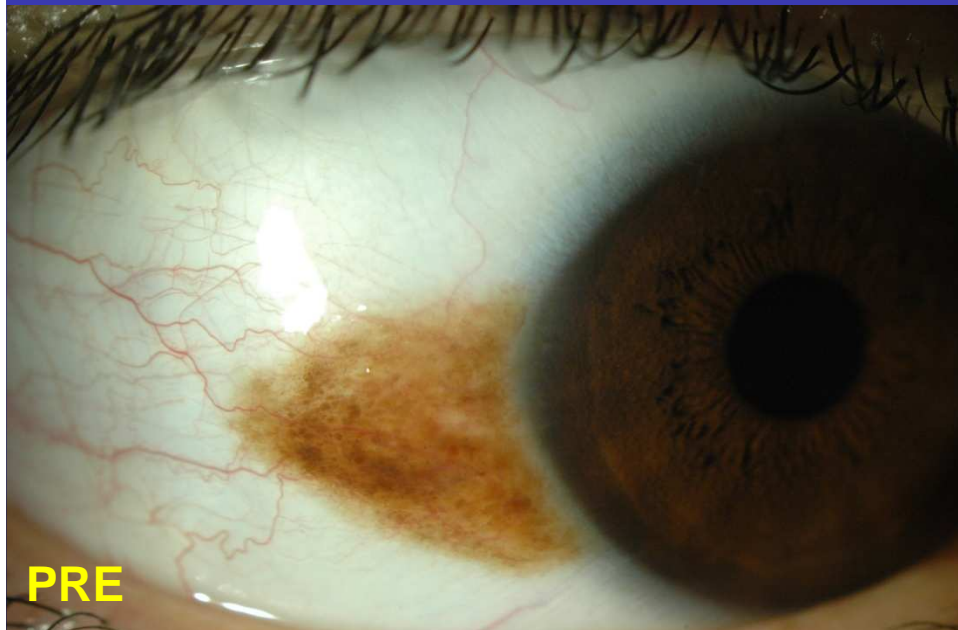


lan/21/2010 10.MH

D.F. ♂ 20aa OS: nevo melanocitico composto pigmentato



M.V. ♀ 35aa OD: nevo melanocitico composto



B.G. ♀ 72aa OS: nevo melanocitico subepiteliale

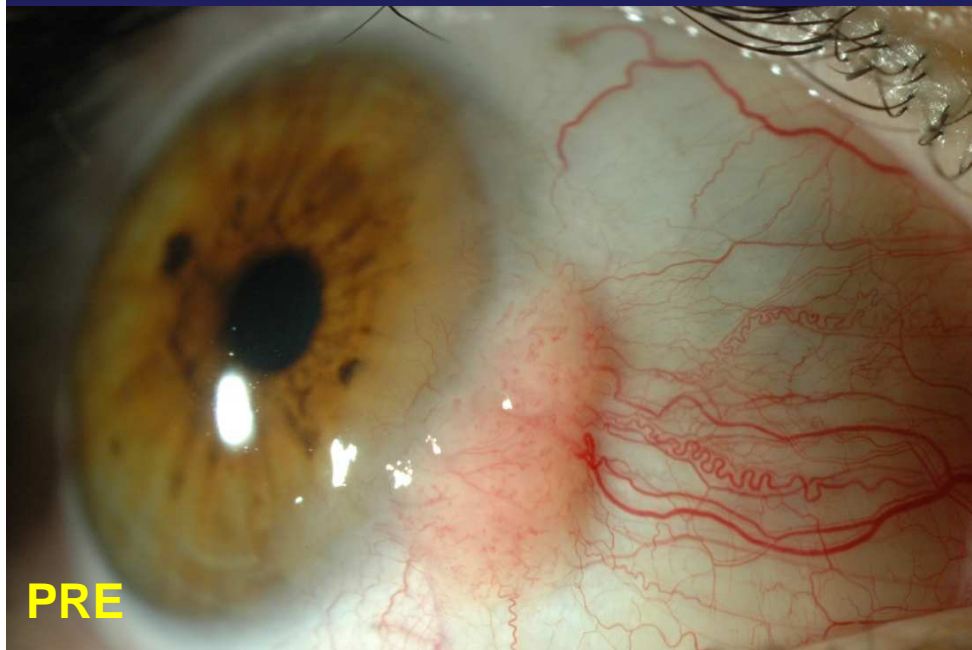
Brachiterapia agosto 2007 per melanoma della coroide e 3 i.v. AntiVegf



Asportazione neo ottobre 2008

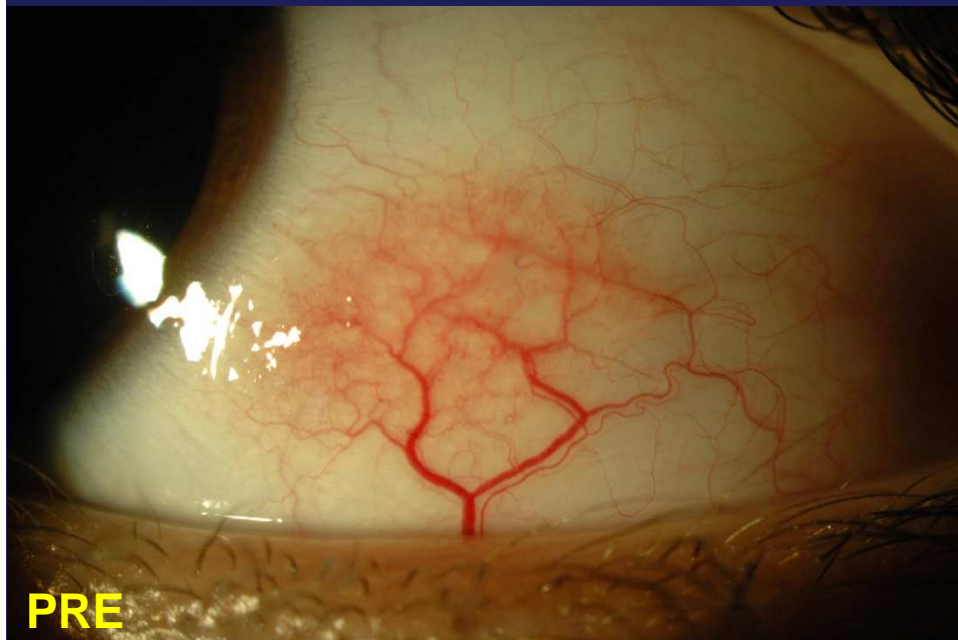
Follow-up 15 mesi

G.R. ♂ 64aa OD: papilloma invertito



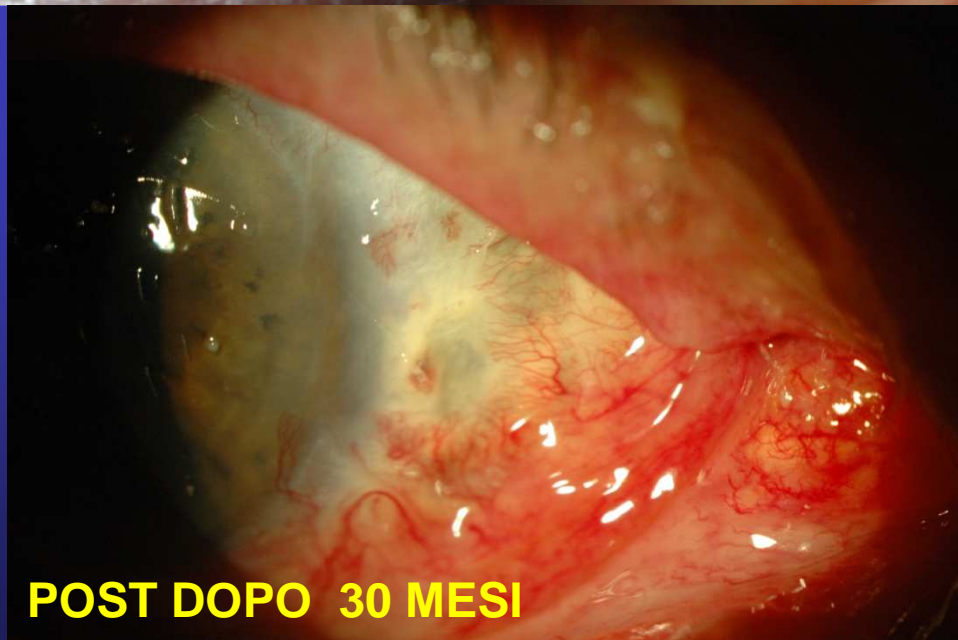
Follow-up 18 mesi

S.G. ♂ 10aa OS: nevo melanocitico composto, cistico



Follow-up 29 mesi

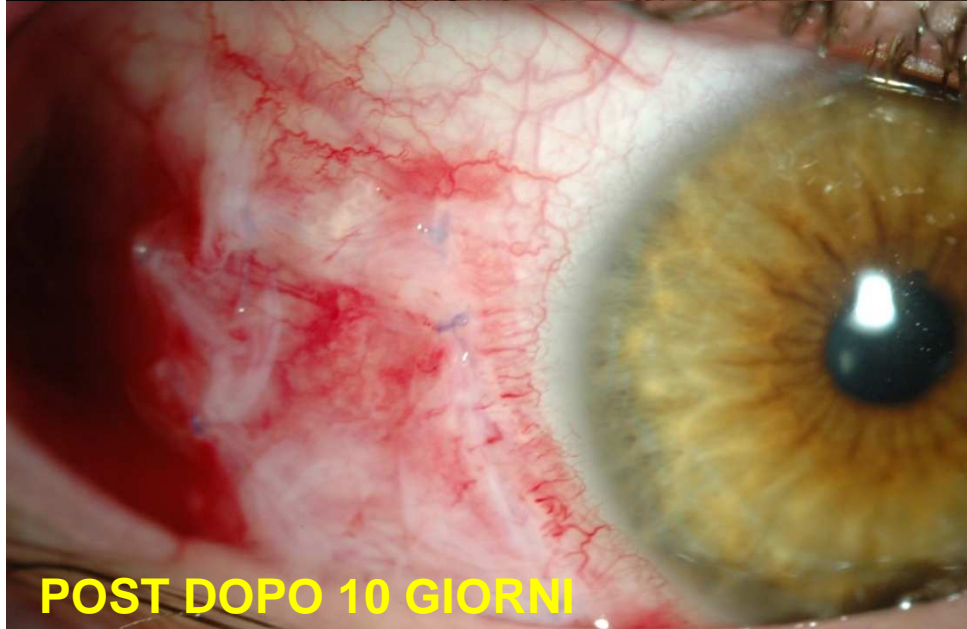
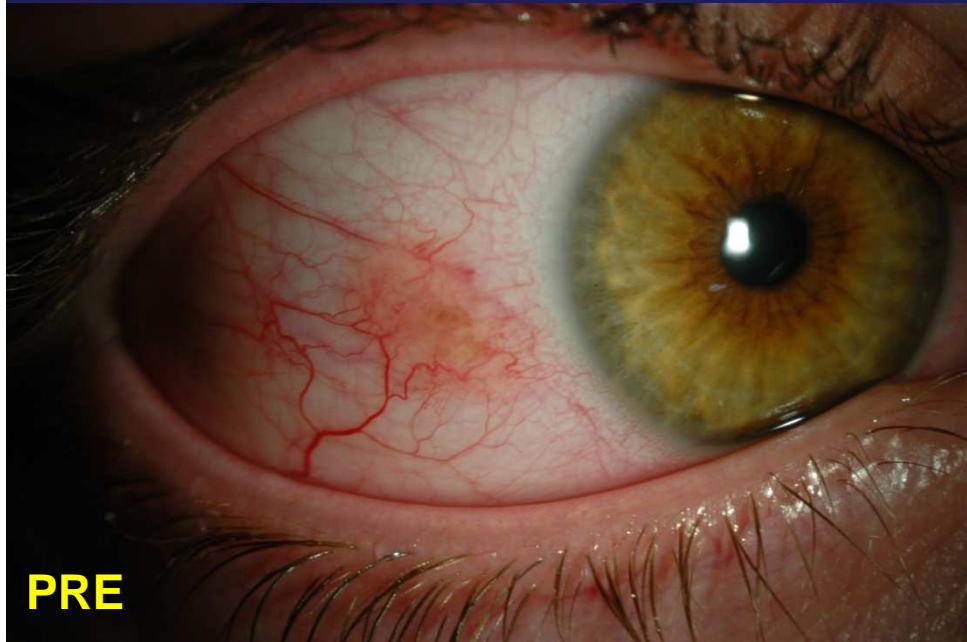
R.N. ♂ 79aa OD: melanoma a cellule fusate apigmentate



ADROTERAPIA DOPO 5 MESI

Follow-up 30 mesi

F.D. ♂ 21 aa OD: nevo melanocitico composto



Follow-up 36 mesi

CONCLUSIONI

- **IMPORTANZA DELL'ESAME ISTOLOGICO PER I NEVI CHE A DISTANZA DI TEMPO PRESENTANO ALTERAZIONI DEL COLORE, DELLA VASCOLARIZZAZIONE E DELLE DIMENSIONI**
- **UTILITA' DELLA MEMBRANA AMNIOTICA NELL'ASPORTAZIONE DI GRANDI TUMORI**
- **ATTENTO FOLLOW-UP**